

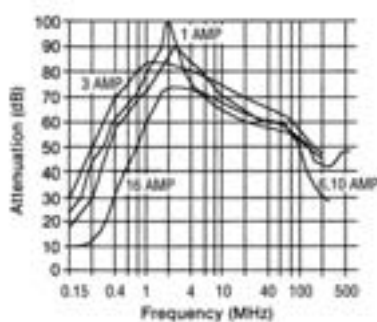
Rating	Order Code	Price Each			
		1+	10+	25+	+
Type D					
3A	975-1971	946.00	861.00	785.00	--
10A	975-2013	1,801.00	1,639.00	1,494.00	--
6A	975-2080	1,508.00	1,372.00	1,325.00	--
Type E					
3A	975-1947	1,602.00	1,458.00	1,330.00	--
10A	975-2021	2,670.00	2,430.00	2,216.00	--
6A	975-2048	2,004.00	1,824.00	1,664.00	--

Rating	Order Code	Price Each					
		1+	10+	48+	144+	+	+
1A	119-1374	1,824.00	1,569.00	1,470.00	1,258.00	--	--
3A	119-1383	1,877.00	1,544.00	1,394.00	1,194.00	--	--
6A	119-1385	1,824.00	1,569.00	1,470.00	1,258.00	--	--
10A	119-1375	1,824.00	1,569.00	1,470.00	1,258.00	--	--
12A	119-1376	1,824.00	1,569.00	1,470.00	1,258.00	--	--
16A	119-1381	2,445.00	2,032.00	1,829.00	1,651.00	--	--
20A	119-1382	3,483.00	3,029.00	2,465.00	2,046.00	--	--

Chassis Mounting, 2 Stage Ultra High Performance



Tabs=6.3 x 0.8



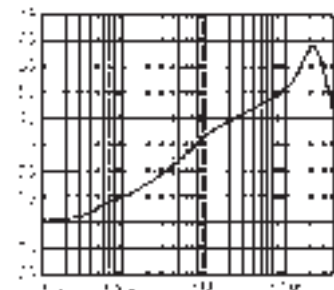
- Two stage chassis mounting filter providing excellent attenuation over a wide frequency range
- Approved to **VDE** and **CSA**.
- **UL** recognised

Current Rating	Inductance (mH)	Dimensions				Operating temperature	Mftrs. List No.	Order Code
Rating		H	W	D	FC	-25°C to +85°C		
1A	2 x 4.3	29	45.5	51.5	61		SF4200-1/01.	453-651
1A	2 x 4.3	29	45.5	51.5	61		SF4200-1/01	943-3830
3A	2 x 2.2	30	51	66	75		SF4200-3/01.	453-663
3A	2 x 2.2	30	51	66	75		SF4200-3/01	943-3848
6A	2 x 1.3	30	51	66	75		SF4200-6/01.	453-675
6A	2 x 1.3	30	51	66	75		SF4200-6/01	943-3856
10A	2 x 1	40	51	66	75		SF4200-10/01.	453-687
10A	2 x 1	40	51	66	75		SF4200-10/01	943-3864
16A	2 x 0.45	40	51	66	75		SF4200-16/01.	453-699
16A	2 x 0.45	40	51	66	75		SF4200-16/01	943-3872

204004

Rating	Order Code	Price Each			
		1+	10+	25+	50+
SF4200-1/01.	1A 453-651	1,820.00	1,409.00	1,332.00	1,336.00
SF4200-1/01	1A 943-3830	1,820.00	1,409.00	1,332.00	1,336.00
SF4200-3/01.	3A 453-663	2,019.00	1,650.00	1,559.00	1,518.00
SF4200-3/01	3A 943-3848	2,019.00	1,650.00	1,559.00	1,429.00
SF4200-6/01.	6A 453-675	2,017.00	1,648.00	1,558.00	1,428.00
SF4200-6/01	6A 943-3856	2,017.00	1,648.00	1,558.00	1,518.00
SF4200-10/01.	10A 453-687	2,017.00	1,648.00	1,557.00	1,516.00
SF4200-10/01	10A 943-3864	2,017.00	1,648.00	1,557.00	1,516.00
SF4200-16/01.	16A 453-699	2,038.00	1,669.00	1,577.00	1,534.00
SF4200-16/01	16A 943-3872	2,038.00	1,669.00	1,577.00	1,444.00

Chassis Mounting - Multi Stage FN2060 Series



- Multi stage general purpose filters with 2 inductors per phase for high common mode attenuation

- **UL** recognised, **VDE**, **SEV** and **CSA** approved. **IEC950** compliant

Current Rating	Inductance (mH)	Capacitors				Weight		Mftrs. List No.	Order Code
Rating		Cx μF	H	W	D	FC	(g)		
1	12	0.22	29.3	46.6	71	61	120	FN2060-1/06	119-1374
3	2.5	0.22	29.3	46.6	71	61	120	FN2060-3/06	119-1383
6	0.97	0.22	29.3	46.6	71	61	120	FN2060-6/06	119-1385
10	0.8	0.47	30.3	54	85	75	190	FN2060-10/06	119-1375
12	0.58	0.47	30.3	54	85	75	190	FN2060-12/06	119-1376
16	0.65	0.33	40.3	54	85	75	260	FN2060-16/06	119-1381
20	0.6	1	45.4	57.5	113.5	103	480	FN2060-20/06	119-1382

204112

Filter/Suppression Modules

High Performance Modules



DIN Rail Mounting
H=93, W=79, D=25

Filter Can
H=40, W=75, D=40

Plastic Enclosure
H=28, W=75, D=110

- High quality mains filter combining surge protection
- Provides protection from voltage surges picked up on the power supply from nearby lightning strikes
- Surge protection exceeds limits laid down in **IEC 1000-4-5** (immunity to conducted voltage surges)
- RFI protection to aid compliance with **IRC 1000-4-6** (immunity to conducted RFI)

Voltage rating	240V	Operating temp.	-25°C to +65°C
Earth Leakage	<0.3mA	Clamping voltage	<700V
Peak surge current	6,500A	Stop baud attenuation	Exceeds (8/20μs Waveform) 60dB in the range 100kHz to 50MHz

204123

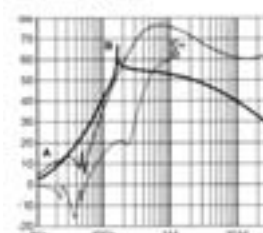
Mftrs List No.	Rating	Order Code	Price Each				
			1+	5+	10+	25+	+
DIN Rail Mounting							
MA05/D/2	5A	262-640	5,267.00	5,004.00	4,741.00	4,251.00	--
MA10/D/2	10A	772-513	6,006.00	5,605.00	5,255.00	4,672.00	--
Metal Filter Can							
MA05/SC/2	5A	453-640	3,466.00	3,246.00	3,235.00	3,203.00	--
MA10/SC/2	10A	772-525	4,388.00	4,430.00	4,196.00	4,055.00	--
Plastic Enclosure							
MA05/I/2	5A	158-082	3,374.00	3,171.00	3,154.00	3,110.00	--

Installation Filters

Three Phase and Neutral



8 amp types



- Designed for asymmetrical loads
- High attenuation
- Small leakage current
- Compact design
- Approved to **SEMKO**

Current Rating	Leakage Current (mA)	Inductance (mH)	Dimensions			Weight	Mftrs. List No.	Order Code	
50°C	40°C		H	W	D	(g)			
16A	18.1A	3.4	1.14	80	120	115	1100	FN 256-16/46	120-9485
25A	28.3A	3.4	1.57	115	130	125	1400	FN 256-25/47	120-9487
36A	40.8A	3.4	1.1	115	130	125	1500	FN 256-36/47	120-9488
64A	72.6A	3.4	1	125	140	125	2200	FN 256-64/52	120-9489

204200

Rating	Order Code	Price Each			
		1+	5+	10+	25+
16A	120-9485	9,530.00	8,270.00	7,312.00	6,764.00
25A	120-9487	12,629.00	10,951.00	10,548.00	9,510.00
36A	120-9488	14,255.00	12,455.00	11,833.00	10,377.00
64A	120-9489	20,563.00	17,998.00	16,659.00	15,012.00

EMC, Filters & Suppression

16

Compliant Non-compliant Limited stock - RoHS replacement available

RoHS